

**PLEASE CHECK WWW.MOLEX.COM FOR LATEST PART INFORMATION**

**Part Number:** [0917773107](#)  
**Status:** **Active**  
**Overview:** [rast 5 connector system](#)  
**Description:** 5.00mm (.197") Appli-Mate RAST 5 IDT Housing, Direct/Indirect, Female, 10A, 1 Circuit, Position Keys A

**Documents:**

[Drawing \(PDF\)](#) [RoHS Certificate of Compliance \(PDF\)](#)  
[Product Specification PS-99020-0037 \(PDF\)](#)

**General**

Product Family IDT and Solder Connectors  
 Series [91777](#)  
 Crimp Quality Equipment Yes  
 Overview [rast 5 connector system](#)  
 Product Name RAST 5  
 Use With RAST standard interface

**Physical**

Circuits (Loaded) 1  
 Circuits (maximum) 1  
 Color - Resin Black  
 Durability (mating cycles max) 10  
 Gender Female  
 Glow-Wire Compliant Yes  
 Lock to Mating Part Yes  
 Material - Metal Phosphor Bronze  
 Material - Plating Mating Silver  
 Material - Plating Termination Silver  
 Material - Resin Nylon  
 Number of Rows 1  
 Packaging Type Tray  
 Panel Mount No  
 Pitch - Mating Interface (in) 0.197 In  
 Pitch - Mating Interface (mm) 5.00 mm  
 Pitch - Term. Interface (in) 0.197 In  
 Pitch - Term. Interface (mm) 5.00 mm  
 Stackable No  
 Temperature Range - Operating -40°C to +120°C  
 Termination Interface: Style IDT or Pierce  
 Wire Size AWG 22, 24

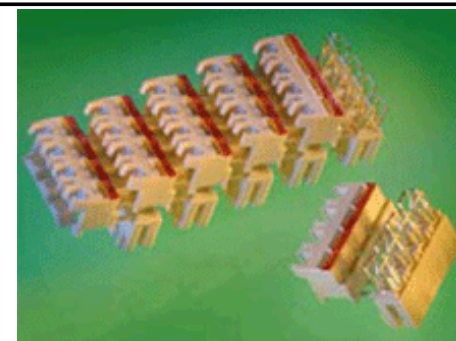
**Electrical**

Current - Maximum per Contact 10A  
 Voltage - Maximum 250V AC

**Material Info**

**Reference - Drawing Numbers**

Application Specification AS-99033-0004  
 Product Specification PS-99020-0037  
 Sales Drawing SD-91777-001



Series

image - Reference only

**EU RoHS**

**ELV and RoHS Compliant**

**REACH SVHC**

Not Reviewed

**Halogen-Free**

**Status**

**Not Halogen-Free**

**China RoHS**



**Need more information on product environmental compliance?**

Email [productcompliance@molex.com](mailto:productcompliance@molex.com)  
 For a multiple part number RoHS Certificate of Compliance, [click here](#)

Please visit the [Contact Us](#) section for any non-product compliance questions.

**Search Parts in this Series**

[91777Series](#)

**Mates With**

Appli-Mate RAST 5.0 Header [90858](#) , [90879](#)

**Application Tooling | FAQ**

*Tooling specifications and manuals are found by selecting the products below. Crimp Height Specifications are then contained in the Application Tooling Specification document.*

**Global**

Description	Product #
RAST 5.0 Semi-Automatic Terminator Machine for Appli-Mate™ Connector 6 and 10 AMP	<a href="#">0623006300</a>

**PLEASE CHECK [WWW.MOLEX.COM](http://WWW.MOLEX.COM) FOR LATEST PART INFORMATION**

10 9 8 7 6 5 4 3 2 1

F

E

D

C

B

A

F

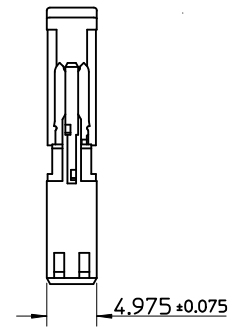
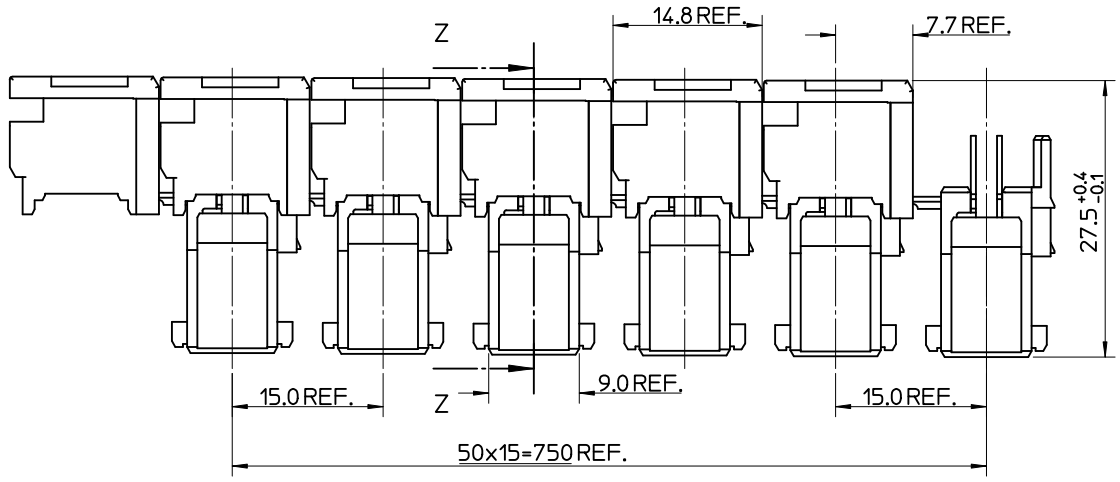
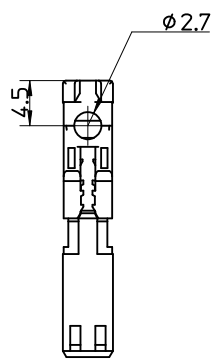
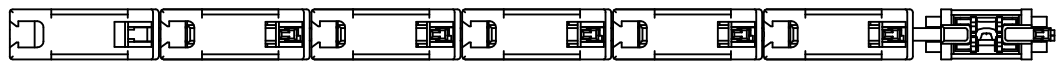
E

D

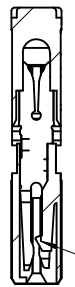
C

B

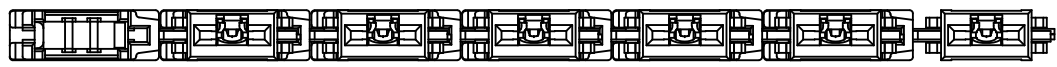
A



Z-Z



LOCKING TAB



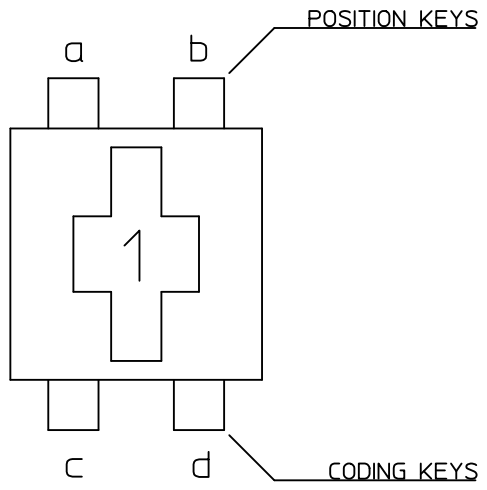
NOTES:

1. MATERIALS:  
 HOUSING: PA6 UL94 V-2  
 TERMINAL: COPPER ALLOY, 0.5 REF THICK  
 PLATING: OPTION 1: 5um MIN PURE Sn ALL OVER  
           OPTION 2: 2um MIN SILVER IN CONTACT AREA  
           0.05um MIN SILVER FLASH ALLOVER
2. PRODUCT CONFORMS TO SPECIFICATION PS-99020-0037
3. PACKAGING SPECIFICATION SEE SPEC PK-90833-001
4. REFER TO APPLICATION SPECIFICATION AS-99033-0004

changed plating spec EC NO: E2010-0213 DRWN: BRITTLE 2010/01/08 CHKD: T. TOURISH 2010/01/19 APPR: BMAGUIRE 2010/01/19	QUALITY SYMBOLS	GENERAL TOLERANCES (UNLESS SPECIFIED)		DIMENSION STYLE MM ONLY		SCALE 2:1	DESIGN UNITS METRIC	THIRD ANGLE PROJECTION	
	▽=0 ▽=0	4 PLACES ± --- ± --- 3 PLACES ± --- ± --- 2 PLACES ± 0.05 ± --- 1 PLACE ± 0.10 ± ---	mm INCH ± --- ± --- ± 0.05 ± --- ± 0.10 ± ---	DRAWN BY GMC SWEEN	DATE 2004/10/12	TITLE 5MM APPLI-MATE 1CKT 10A FEMALE CONNECTOR			
		ANGULAR ± 2 °		CHECKED BY BMAGUIRE	DATE 2005/01/07	MOLEX INCORPORATED			
		DRAFT WHERE APPLICABLE MUST REMAIN WITHIN DIMENSIONS		APPROVED BY BMAGUIRE	DATE 2005/01/07	MATERIAL NO. SEE SHEET 2	DOCUMENT NO. SD-91777-001	SHEET NO. 1 OF 2	
			THIS DRAWING CONTAINS INFORMATION THAT IS PROPRIETARY TO MOLEX INCORPORATED AND SHOULD NOT BE USED WITHOUT WRITTEN PERMISSION						

9 8 7 6 5 4 3 2 1

MOLEX PART NUMBER	TERMINAL (see note1 sheet1)	COLOUR	POSITION KEYS	CODING KEYS	CONFIGURATION	REF.
91777-0102	OPTION 1 (TIN)	NATURAL	b	c d		K02
91777-3102	OPTION 2 (SILVER)					
91777-0103	OPTION 1 (TIN)	NATURAL	NONE	NONE		K**
91777-3103	OPTION 2 (SILVER)					
91777-0104	OPTION 1 (TIN)	NATURAL	NONE	c		K11
91777-3104	OPTION 2 (SILVER)					
91777-0105	OPTION 1 (TIN)	NATURAL	a	c		K09
91777-3105	OPTION 2 (SILVER)					
91777-0106	OPTION 1 (TIN)	NATURAL	a, b	c, d		K00
91777-3106	OPTION 2 (SILVER)					
91777-0107	OPTION 1 (TIN)	BLACK	a, b	d		K01
91777-3107	OPTION 2 (SILVER)					



SEE SHEET 1 EC NO: E2010-0213 DRWN: BRUTTLE 2010/01/08 CHKD: T. TOURISH 2010/01/19 APPR: BMAGUIRE 2010/01/19	QUALITY SYMBOLS	GENERAL TOLERANCES (UNLESS SPECIFIED)	DIMENSION STYLE	SCALE	DESIGN UNITS	THIRD ANGLE PROJECTION
	▼=0 ▽=0	mm    INCH 4 PLACES ± --- ± --- 3 PLACES ± --- ± --- 2 PLACES ± 0.05 ± --- 1 PLACE ± 0.10 ± --- ANGULAR ± 2 °	MM ONLY	2:1	METRIC	
	DESCRIPTION	DRAFT WHERE APPLICABLE MUST REMAIN WITHIN DIMENSIONS	DRAWN BY: GMC SWEEN    DATE: 2004/10/12 CHECKED BY: BMAGUIRE    DATE: 2005/01/07 APPROVED BY: BMAGUIRE    DATE: 2005/01/07	TITLE: 5MM APPLI-MATE 1CKT 10A FEMALE CONNECTOR		
	REV	SIZE: A3	MATERIAL NO. SEE CHART DOCUMENT NO. SD-91777-001 SHEET NO. 2 OF 2	MOLEX INCORPORATED		

THIS DRAWING CONTAINS INFORMATION THAT IS PROPRIETARY TO MOLEX INCORPORATED AND SHOULD NOT BE USED WITHOUT WRITTEN PERMISSION